



Featured wheel

R954

Corvette Specific Sizes

19x9
20x10.5

Premium Staggered Sizes

20x8.5 22x9.0
20x10 22x10.5



Gloss Black w/ Machined Face



Hyper Silver w/ Machined Face

*also available in Matte Black w/ Machined Face



Staggered, Staggered, and more Staggered. This is the hottest feature in luxury performance right now and we have a selection that is guaranteed to please! Whether you're looking to enhance a Camaro, 300C, BMW, Lexus, Infiniti or so much more, we have the best designs for all your luxury style needs. And all our wheels go through extensive, rigorous testing to make sure that we deliver top quality products that are stunning specimens of both style and performance. Great color options, deep lips or concave, extra caliper clearance for large calipers, and now optional Stainless Lips are all features in our extended line-up for 2014.

LUXURY PERFORMANCE collection

LUXURY PERFORMANCE collection

Full Line-up: This 2014 Luxury Performance collection consists of 9 styles



R981



R980



R960



R955



R954



R954 CORVETTE



R953



R944 CORVETTE



R359

Staggered Sizes

20x8.5 22x9
20x10 22x10



Full Satin Black

Gloss Black w/ Machined Face

(22X10 Shown)



R960

- The best sport luxury design Ruff Racing has to offer
- Has the most concave of any of our models
- Sharp angled spokes that don't quit

R960



ALMOST 4" OF CONCAVE



FORGED-LIKE SPOKES



UNIQUE MESH DESIGN



Staggered Sizes

20x8.5 22x9
20x10 22x10



Full Satin Black

Shown w/ SS Lip (optional)



Gloss Black w/ Machined Face

Shown w/ SS Lip (optional)

(22X10 Shown)



R980

- The perfect blend of elegance and performance
- A deep lip enhances the look of staggered fitments
- Open multi-spoke design and unique center gives the wheel a unique feel

R980



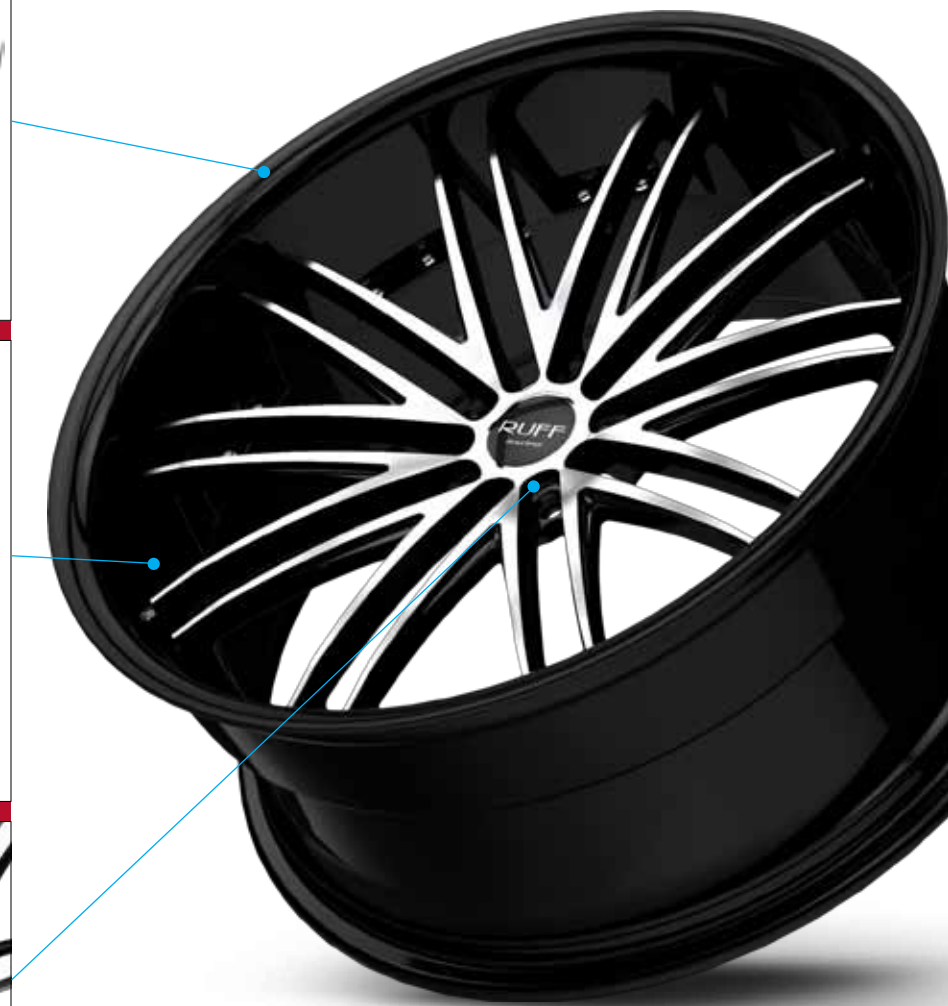
OPTIONAL SS LIP



4.5" REAR LIP ON 22"



UNIQUE FLOATING CENTER



R981



Staggered Sizes

20x8.5	22x9
20x10	22x10



Hyper Silver w/ Machined Face

Shown w/ SS Lip (Optional)



Gloss Black w/ Machined Face

Shown w/ SS Lip (Optional)



R981

- European inspired straight lace design
- Machining on the top of spokes brightens the face and adds detail
- Great staggered width options and deep lips depths almost up to 5"



R955

- A sophisticated split 10-spoke design
- Brakes and mechanical parts remain hidden
- Staggered widths and varied concave angles for enhanced fit and appeal



Staggered Sizes

20x8.5	22x9
20x10	22x10



Matte Black w/ Machined Face

Gloss Black w/ Machined Face

R955



Hyper Silver w/ Machined Face



R359

Staggered Sizes

20x8.5	22x8.5	24x9
20x10	22x10	24x10



Gloss Black w/ Machined Face

Hyper Silver w/ Machined Face



R359

- A super bold and aggressive design
- Concave spokes with enhanced large brake clearance
- Deep step-back lip gives a little more kick to this 5-Spoke design



R953

- Forged wheel appearance at the cost of a traditional cast wheel
- Straight 9 spoke with deep center hub area
- Spokes specially molded for sharp corners

Staggered Sizes

18x8	20x8.5	22x9
18x9.5	20x10	22x10



Gloss Black w/ Machined Face & Pin

Chrome

R953



R954



Staggered Sizes

19x9
20x10.5



Gloss Black w/ Machined Face

Hyper Silver w/ Machined Face



R954 CORVETTE EDITION

- Featuring a light and streamlined design
- Accentuated concave depth with an open split spoke design and extra low center hub
- Staggered widths and varied concave angles for enhanced fit and appeal

CORVETTE
E D I T I O N



R944 CORVETTE EDITION

- Our hottest wheel for your hottest car
- Unique spoke design that adds character and style
- Hub Centric and right offsets for all C5 and C6 Corvettes



Staggered Sizes

19x9
20x10.5



Gloss Black w/ Machined Face & Pin

Chrome

R944



CORVETTE
E D I T I O N





Featured wheel

R358

Sizes

15x8.5



Gold w/ Machined Center & Lip

- Concaved Stretch Tuner
- Old School Japanese center design
- Deep 3" Lip



STRETCH-COMPACT collection

STRETCH-COMPACT collection

Full Line-up: This 2014 Stretch-Compact collection consists of 15 styles



Sizes

17x8 17x9 18x9



Gloss Black w/ Machined Lip & Milled Spoked

Satin Black w/ Machined Lip

(17x9 Shown)



R958

- Perfect for stretch or non-stretch
- Optional milled spokes available
- A newly designed Concave Tuner that still keeps a 3" Lip (17x9)

R958



MILLED SPOKES



3" LIP DEPTH ON 17X9



CONCAVED TUNER



Sizes

15x8.5



Full Satin Black

Satin Black w/ Machined Center & Lip



Gold w/ Machined Center & Lip

Hyper Silver w/ Machined Center & Lip



R358

- The look of new Stretch meets classic Tuner
- Old School Japanese center design with a new concave twist
- The 10 spoke ends hang slightly over the step lip and concave back to the hub-center

R358



MACHINED CENTER



3" LIP DEPTH



CONCAVE TUNER



R959

Sizes

17x8 18x8.5 20x8.5



Full Satin Black

Gloss Black w/ Red Stripe



R959

- Light and racy split 6-spoke design.
- Extra thin spokes for that long and lean look
- Deep concave and a separated step from the spoke

R956

- Deep lip and concave face
- Classic 5-spoke design with a modern look
- Super new casting design gives a clean look on any car

Sizes

18x8 20x8.5 22x9



Full Satin Black

Gloss Black w/ Machined Face



Chrome

R956



R957

Sizes

17x7.5 18x8 20x8



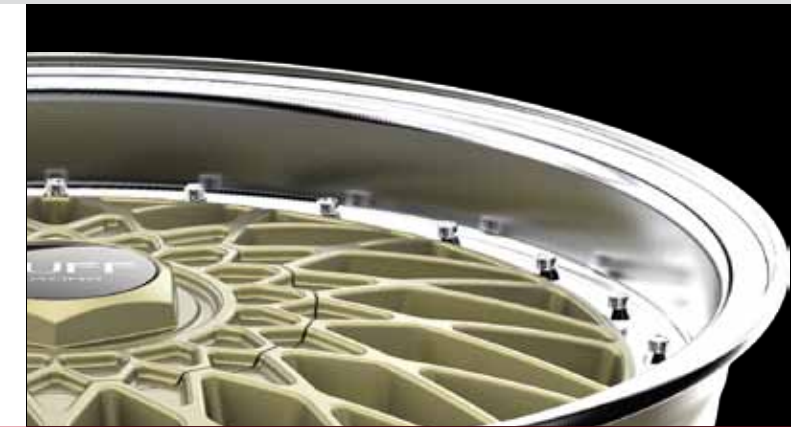
Gold w/ Machined Lip

Gloss Black w/ Machined Lip



R957

- Classic tight web mesh with a contemporary feel
- An updated approach on a classic old school design
- Featuring the latest new style no-step, larger center lip



R360

- Super concave euro-mesh design
- Engraved detailing within the center area
- No lip for maximum concave and high-performance brake clearance



Staggered Sizes

20x8.5
20x10



Full Satin Black

Gloss Black w/ Machined Face & Pin

R360



R355

Sizes

15x7 17x7.5 18x8



Flat Black w/ Machined Center & Pin

Flat Black w/ Red Pin



R355

- Full mesh without an extra busy look
- Extra thin rounded Euro-Mesh design
- It's what we like to call Clean and Classic



Hyper Silver w/ Machined Pin



R351

- Customizable with 4 color options
- A great stylish addition to almost any car
- Euro block mesh design with extra sharp edges gives it the look of a forged wheel



Sizes

17x7.5 18x8



Flat Black

Flat Black w/ Machined Face

R351



Hyper Silver w/ Machined Face

Flat Gunmetal



R354



Sizes

15x7 17x7.5 18x8



Gloss Black w/ Machined Center & Pin

Gloss Black w/ Red Pin



R354

- Super clean split 5 design
- Great for strength, and light weight
- Designed for extra caliper clearance



Hyper Silver w/ Machined Pin



R353

- Straight 9 spoke with deep center hub area
- Spokes specially molded for sharp corners
- Forged wheel appearance at the cost of a traditional cast wheel



Sizes

17x7.5 18x8



Gloss Black w/ Machined Face

Gloss Black w/ Machined Face & Red Pin

R353



Hyper Silver w/ Machined Face



R357

Sizes

18x8



Hyper Silver w/ Machined Lip



Gloss Black w/ Machined Lip



R357

- Extra clean looking 5-spoke design
- Single drilled for 5 lug fitments only
- Very elegant without any unwanted extra lug holes



R280

- Super Deep Lip
- Large Caliper Clearance
- Timeless 5-Spoke design



Sizes

17x7 18x8.5 20x8.5



Gloss Black w/ Machined Lip



Chrome

R280



R950



Sizes

15x6.5 17x7.5 18x8



Gloss Black w/ Red Pins

Gloss Black w/ Machined Pin



R950

- Featuring a classic euro tuner fin design
- Engineered specifically to fit today's small sport vehicles
- Available in 2 finishes: gloss black with machined pin stripe or gloss black with red pin stripe



R951



Sizes

17x7.5 18x8



Gloss Black w/ Red Pins

Gloss Black w/ Machined Pins

R951

- Deep Lip Mesh Design
- Staggered Lip high offset wheel
- Differing size lips on the same widths wheels

**FRONT LIP - 2" LIP
REAR LIP - 3" LIP**

Sizes

17x7.5



Chrome

Gloss Black w/ Machined Pin

R952

- Perfect for any Sport Compact application
- Staggered Lip high offset wheel
- Differing size lips on the same widths wheels

**FRONT LIP - 2" LIP
REAR LIP - 3" LIP**

Gloss Black w/ Red Pins

R952

